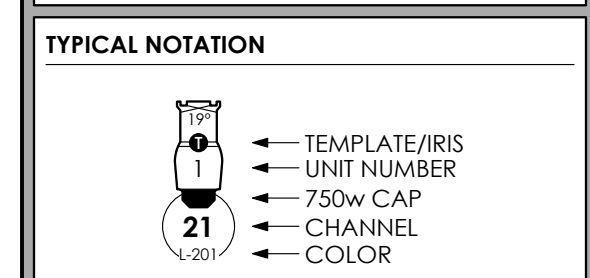


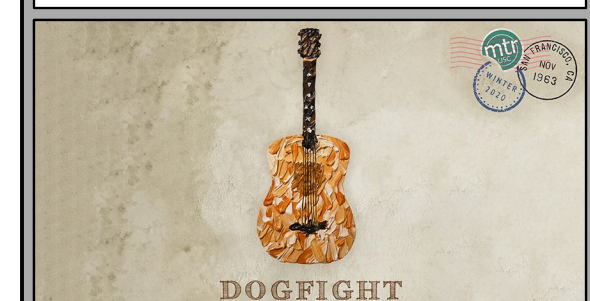
- LEGEND**
- ETC Source4 50deg @ 575w
 - ETC Source4 26deg @ 750w
 - 6x9 ERS @ 500w
 - 6\" Fresnel @ 500w
 - 8\" Fresnel @ 1kw
 - Chauvet COLORdash Par Hex 7 @ 63w
 - Elation Satira Profile @ 650w
 - Elation Fuze Wash Z120 @ 157w
 - Rosco I-Cue
 - Practical

- GENERAL NOTES**
1. Circuiting per production electrician.
 2. No substitutions without the written approval of the designer.
 3. Refer to hookup for all final color and template info.
 4. Channels 61-63 yolk forward 90°.
 5. Channels 1 and 2 yolk backwards 90° (i-Cue at 45° angle, mirror facing onstage).
 6. Hang all moving fixtures with screens facing upstage.
 7. Run Elation Satira Profiles in 54 Channel mode.
 8. Run Elation FUZE Z120 Wash units in 19 Channel mode.
 9. Run Chauvet Professional COLORdash HEX7 Pars in 13 Channel mode.
 10. Run I-Cues and DMX ties in 16-bit mode.



1	PRELIMINARY	10/23/2019
2	LOS ANGELES FINAL	12/30/2019
3	AS BUILT	1/22/2020

DOG FIGHT



PRODUCED BY
USC MUSICAL THEATRE REPERTORY

DIRECTED BY:.....AUSTIN KARKOWSKY
 SCENERY DESIGNED BY:.....JORDAN FOX
 LIGHTING DESIGNED BY:.....EDWARD HANSEN
 ASST. LIGHTING DESIGNER:.....PAYTON TRUSKOWSKI
 PRODUCTION ELECTRICIAN:.....EDWARD HANSEN

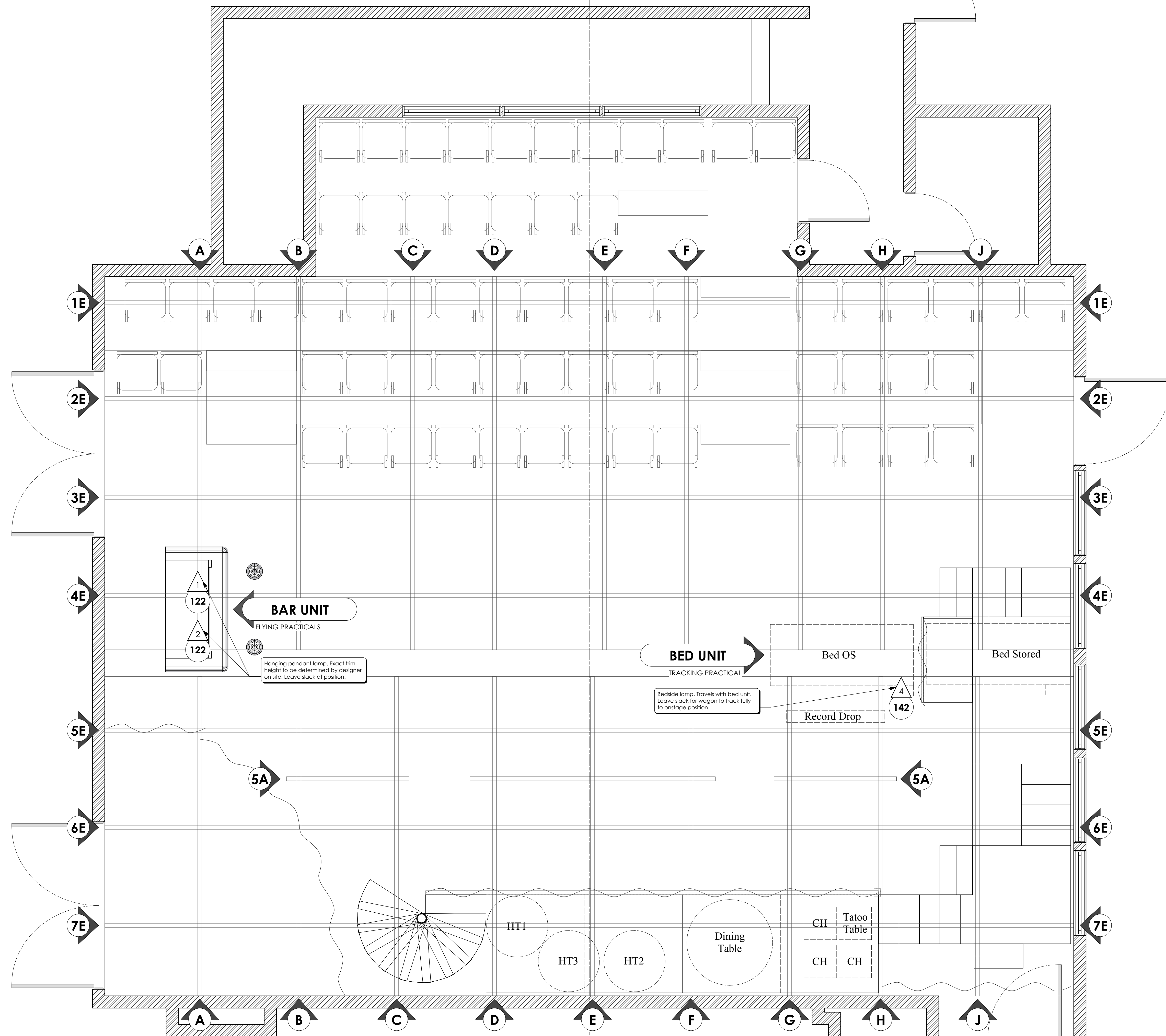
MASSMAN THEATRE
LOS ANGELES, CA

EDWARD HANSEN
LIGHTING DESIGN
(914) 629-4164 • hanseno@usc.edu

THE DRAWING REPRESENTS VISUAL CONCEPTS AND CONSTRUCTION SUGGESTIONS ONLY. IT DOES NOT REPLACE THE KNOWLEDGE AND ADVICE OF A LICENSED STRUCTURAL ENGINEER. THE DESIGNER IS UNQUALIFIED TO DETERMINE THE STRUCTURAL APPROPRIATENESS OF THE DESIGN AND WILL NOT ASSUME RESPONSIBILITY FOR IMPROPER ENGINEERING OR USE.

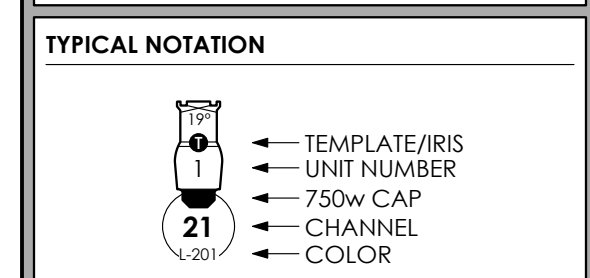
SCALE: 1/2" = 1'-0"	PLATE:
DRAWN: ESH	1
DATE: 1/22/2020	of 3
VERSION: 1.0	

1 LIGHT PLOT
Scale: 1/2" = 1'-0"



- LEGEND**
- ETC Source4 50deg @ 575w
 - ETC Source4 26deg @ 750w
 - 6x9 ERS @ 500w
 - 6" Fresnel @ 500w
 - 8" Fresnel @ 1kw
 - Chauvet COLORdash Par Hex 7 @ 63w
 - Elation Satira Profile @ 650w
 - Elation Fuze Wash Z120 @ 157w
 - Rosco I-Cue
 - Practical

- GENERAL NOTES**
1. Circuited per production electrician.
 2. No substitutions without the written approval of the designer.
 3. Refer to hookup for all final color and template info.
 4. Channels 61-63 yolk forward 90°.
 5. Channels 1 and 2 yolk backwards 90° (i-Cue at 45° angle, mirror facing onstage).
 6. Hang all moving fixtures with screens facing upstage.
 7. Run Elation Satira Profiles in 54 Channel mode.
 8. Run Elation FUZE Z120 Wash units in 19 Channel mode.
 9. Run Chauvet Professional COLORdash HEX7 Pars in 13 Channel mode.
 10. Run I-Cues and DMX ties in 16-bit mode.



REV #	REVISION	DATE
1	PRELIMINARY	10/23/2019
2	LOS ANGELES FINAL	12/30/2019
3	AS BUILT	1/22/2020



PRODUCED BY
USC MUSICAL THEATRE REPERTORY

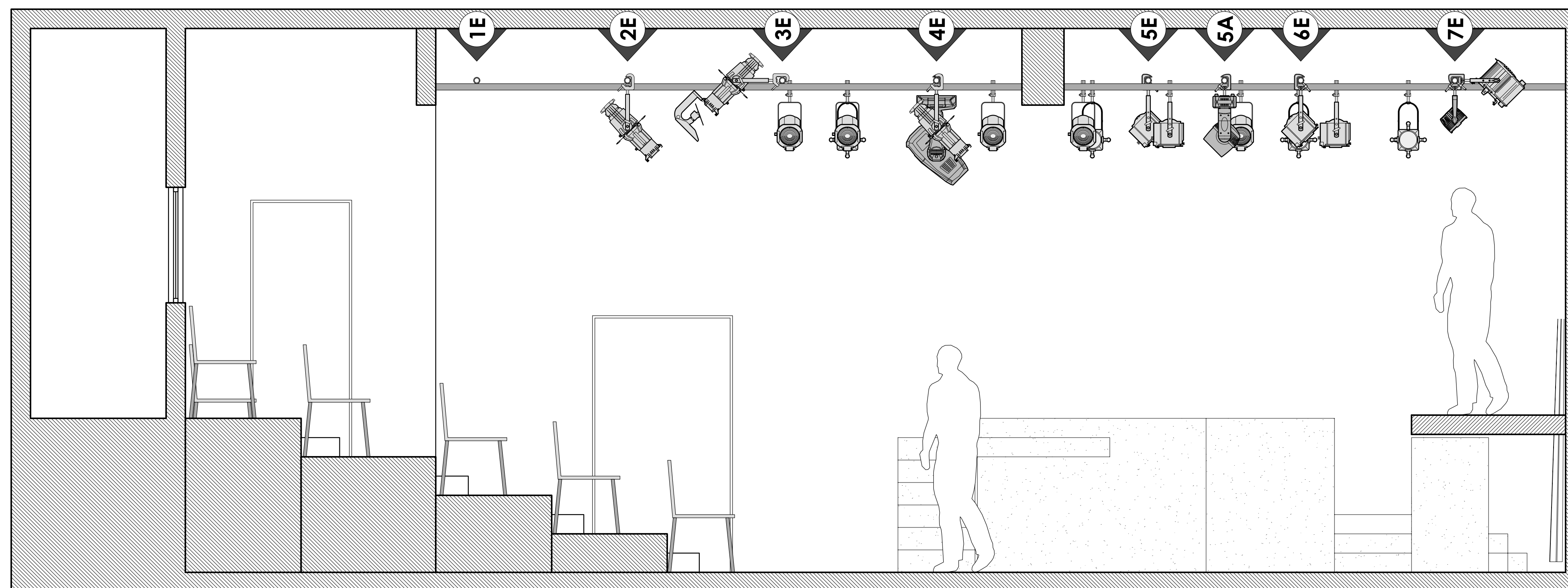
DIRECTED BY:.....AUSTIN KARKOWSKY
 SCENERY DESIGNED BY:.....JORDAN FOX
 LIGHTING DESIGNED BY:.....EDWARD HANSEN
 ASST. LIGHTING DESIGNER:.....PAYTON TRUSKOWSKI
 PRODUCTION ELECTRICIAN:.....EDWARD HANSEN

MASSMAN THEATRE
LOS ANGELES, CA

EDWARD HANSEN
LIGHTING DESIGN
(914) 629-4164 • hanseno@usc.edu

THE DRAWING REPRESENTS VISUAL CONCEPTS AND CONSTRUCTION SUGGESTIONS ONLY. IT DOES NOT REPLACE THE KNOWLEDGE AND ADVICE OF A LICENSED STRUCTURAL ENGINEER. THE DESIGNER IS UNQUALIFIED TO DETERMINE THE STRUCTURAL APPROPRIATENESS OF THE DESIGN AND WILL NOT ASSUME RESPONSIBILITY FOR IMPROPER ENGINEERING OR USE.

SCALE: 1/2" = 1'-0"	PLATE: 2 of 3
DRAWN: ESH	
DATE: 1/22/2020	
VERSION: 1.0	



LEGEND

	ETC Source4 50deg @ 575w
	ETC Source4 26deg @ 750w
	6x9 ERS @ 500w
	6\"/>
	8\"/>
	Chauvet COLORdash Par Hex 7 @ 63w
	Elation Satira Profile @ 650w
	Elation Fuze Wash Z120 @ 157w
	Rosco I-Cue
	Practical

- GENERAL NOTES**
1. Circuited per production electrician.
 2. No substitutions without the written approval of the designer.
 3. Refer to hookup for all final color and template info.
 4. Channels 61-63 yolk forward 90°.
 5. Channels 1 and 2 yolk backwards 90° (i-Cue at 45° angle, mirror facing onstage).
 6. Hang all moving fixtures with screens facing upstage.
 7. Run Elation Satira Profiles in S4 Channel mode.
 8. Run Elation FUZE Z120 Wash units in 19 Channel mode.
 9. Run Chauvet Professional COLORdash HEX7 Pars in 13 Channel mode.
 10. Run I-Cues and DMX ties in 16-bit mode.

TYPICAL NOTATION

	← TEMPLATE/IRIS
	← UNIT NUMBER
	← 750w CAP
	← CHANNEL
	← COLOR

1	PRELIMINARY	10/23/2019
2	LOS ANGELES FINAL	12/30/2019
3	AS BUILT	1/22/2020

REV #	REVISION	DATE
-------	----------	------

DOGFIGHT



PRODUCED BY
USC MUSICAL THEATRE REPERTORY
 DIRECTED BY:.....**AUSTIN KARKOWSKY**
 SCENERY DESIGNED BY:.....**JORDAN FOX**
 LIGHTING DESIGNED BY:.....**EDWARD HANSEN**
 ASST. LIGHTING DESIGNER:.....**PAYTON TRUSKOWSKI**
 PRODUCTION ELECTRICIAN:.....**EDWARD HANSEN**

MASSMAN THEATRE
 LOS ANGELES, CA

EDWARD HANSEN
 LIGHTING DESIGN
 (914) 629-4164 • hanseno@usc.edu

THIS DRAWING REPRESENTS VISUAL CONCEPTS AND CONSTRUCTION SUGGESTIONS ONLY. IT DOES NOT REPLACE THE KNOWLEDGE AND ADVICE OF A LICENSED STRUCTURAL ENGINEER. THE DESIGNER IS UNQUALIFIED TO DETERMINE THE STRUCTURAL APPROPRIATENESS OF THE DESIGN AND WILL NOT ASSUME RESPONSIBILITY FOR IMPROPER ENGINEERING OR USE.

SCALE: 1/2" = 1'0"	PLATE:
DRAWN: ESH	3
DATE: 1/22/2020	OF 3
VERSION: 1.0	

CL SECTION