

LEGEND

	ETC S4 19deg @ 575w	8 / 0
	ETC S4 19deg @ 750w	6 / 0
	ETC S4 26deg @ 575w	4 / 0
	ETC S4 36deg @ 575w	4 / 10
	ETC S4 50deg @ 575w	28 / 44
	ETC S4 Jr. 25-50deg @ 575w	8 / 8
	Selecon Pacific Zoom 25-50deg @ 575w	27 / 27
	ETC S4 PAR WFL @ 575w	21 / 20
	6" Fresnel @ 500w	30 / 29
	ETC Selador Desire D40 NSP Round @ 110w	6 / 0
	ETC Selador Desire D40 NSP Round @ 110w	0 / 0
	ETC D40 Medium Round @ 110w	4 / 0
	PAR38 House Light @ 150w	18 / 22
	Confetti Cannon	3 / 0
	I-Cue	4 / 0
	Hazer	1 / 0

GENERAL NOTES

1. Circuting per production electrician.
2. No substitutions without the written approval of the designer.
3. Refer to hookup for all final color and template info.
4. Please leave slack of all deck mounted instruments; position subject to change by designer at focus.
5. Have barndoors, top-hats, and spare cuts of R-119, and R-132 in all sizes available at focus.
6. If it is discovered a light will collide with one of the flying light object orbs during hang, move instrument to closest possible location to allow full range of focus.

TYPICAL NOTATION

	UNIT NUMBER
	CHANNEL

1	ROUGH	9/22/2019
2	PRELIMINARY	9/23/2019
3	LOS ANGELES FINAL	9/25/2019
4	REHEARSAL REVISION	10/2/2019
5	TECH REVISION	10/6/2019
REV #	REVISION	DATE

AMSTERDAM

PRODUCED BY
THE USC SCHOOL OF DRAMATIC ARTS

DIRECTED BY:LILACH DEKEL-AYNER
SCENERY DESIGNED BY:ROBERT FEFFER
LIGHTING DESIGNED BY:EDWARD HANSEN
COSTUMES DESIGNED BY:EDINA HESER
PRODUCTION ELECTRICIAN:C.B. BORGER

SCENE DOCK THEATRE
LOS ANGELES, CA

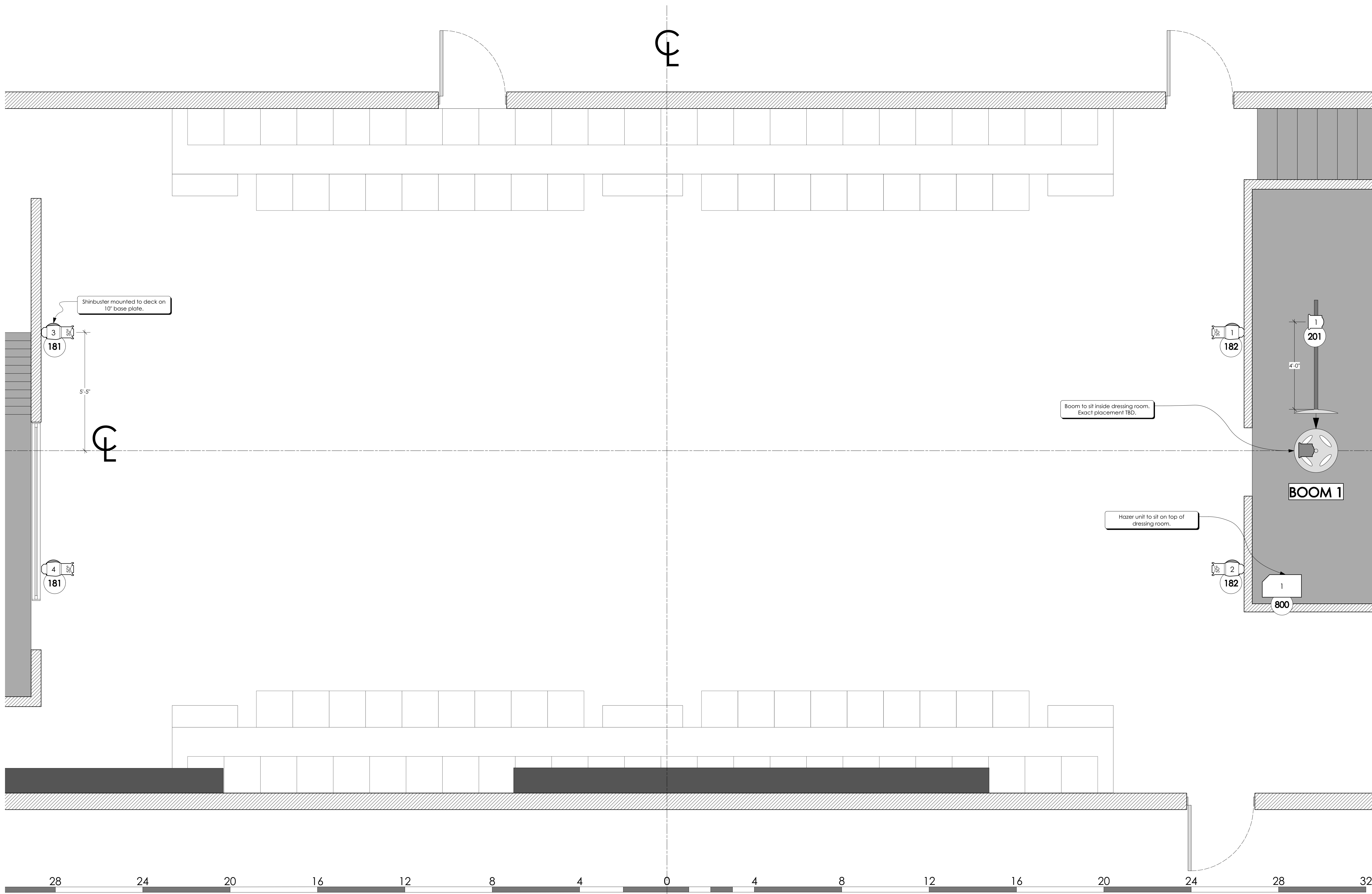
EDWARD HANSEN LIGHTING DESIGN
(914) 629-4164 • hansene@usc.edu

THE DRAWING REPRESENTS VISUAL CONCEPTS AND CONSTRUCTION SUGGESTIONS ONLY. IT DOES NOT REPLACE THE KNOWLEDGE AND ADVICE OF A LICENSED STRUCTURAL ENGINEER. THE DESIGNER IS UNWILLING TO DETERMINE THE STRUCTURAL APPROPRIATENESS OF THE DESIGN AND WILL NOT ASSUME RESPONSIBILITY FOR IMPROPER ENGINEERING OR USE.

SCALE: 1/2" = 1'-0"	PLATE: 1 OF 4
DRAWN: ESH	
DATE: 10/6/2019	
VERSION: 1.0	

LIGHT PLOT

1 LIGHT PLOT
Scale: 1/2" = 1'-0"

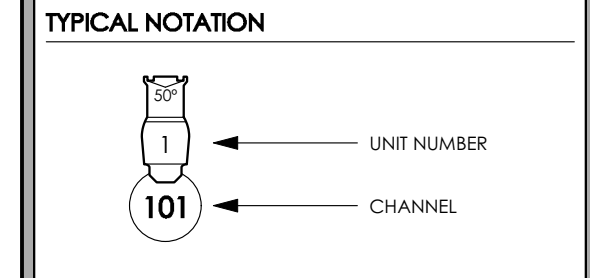


LEGEND

	ETC S4 19deg @ 575w	8 / 0
	ETC S4 19deg @ 750w	6 / 0
	ETC S4 26deg @ 575w	4 / 0
	ETC S4 36deg @ 575w	4 / 10
	ETC S4 50deg @ 575w	28 / 44
	ETC S4 Jr. 25-50deg @ 575w	8 / 8
	Selecon Pacific Zoom 25-50deg @ 575w	27 / 27
	ETC S4 PAR WFL @ 575w	21 / 20
	6" Fresnel @ 500w	30 / 29
	ETC Selador Desire D40 NSP Round @ 110w	6 / 0
	ETC Selador Desire D40 NSP Round @ 110w	0 / 0
	ETC D40 Medium Round @ 110w	4 / 0
	PAR38 House Light @ 150w	18 / 22
	Confetti Cannon	3 / 0
	I-Cue	4 / 0
	Hazer	1 / 0

GENERAL NOTES

1. Circuited per production electrician.
2. No substitutions without the written approval of the designer.
3. Refer to hookup for all final color and template info.
4. Please leave slack of all deck mounted instruments; position subject to change by designer at focus.
5. Have barndoors, top hats, and spare cuts of R-119, and R-132 in all sizes available at focus.
6. If it is discovered a light will collide with one of the flying light object orbs during hang, move instrument to closest possible location to allow full range of focus.



REV #	REVISION	DATE
1	ROUGH	9/22/2019
2	PRELIMINARY	9/23/2019
3	LOS ANGELES FINAL	9/23/2019
4	REHEARSAL REVISION	10/2/2019
5	TECH REVISION	10/6/2019

AMSTERDAM

PRODUCED BY
THE USC SCHOOL OF DRAMATIC ARTS

DIRECTED BY:LILACH DEKEL-AYNERI
 SCENERY DESIGNED BY:ROBERT FEFFER
 LIGHTING DESIGNED BY:EDWARD HANSEN
 COSTUMES DESIGNED BY:EDINA HSEER
 PRODUCTION ELECTRICIAN:C.B. BORGER

SCENE DOCK THEATRE
 LOS ANGELES, CA

EDWARD HANSEN
 LIGHTING DESIGN

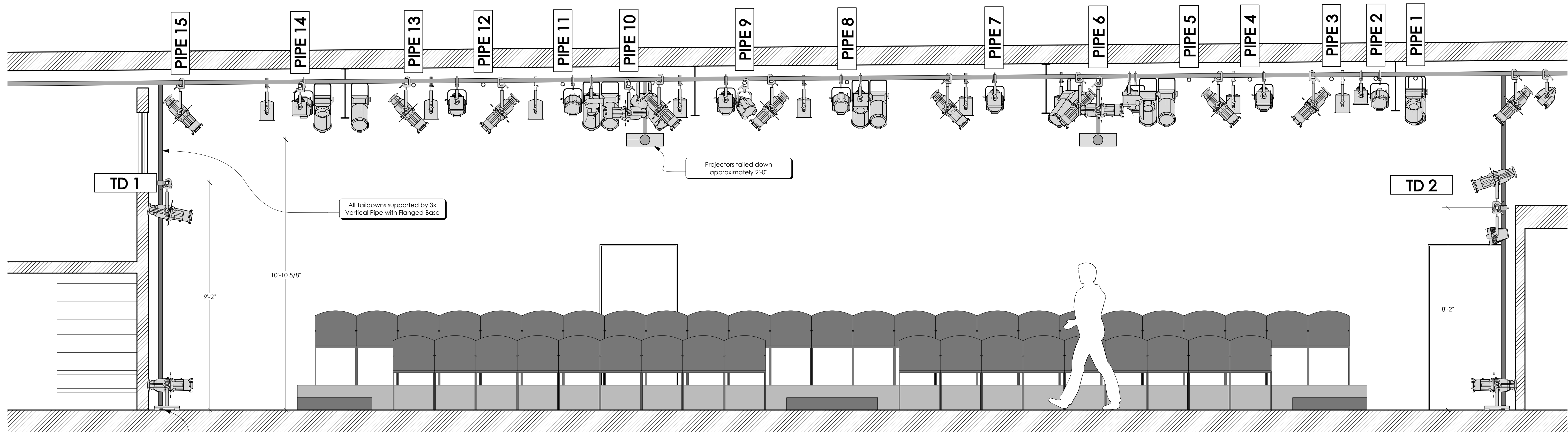
(914) 629-4164 • hansene@usc.edu

THE DRAWING REPRESENTS VISUAL CONCEPTS AND CONSTRUCTION SUGGESTIONS ONLY. IT DOES NOT REPLACE THE KNOWLEDGE AND ADVICE OF A LICENSED STRUCTURAL ENGINEER. THE DESIGNER IS UNQUALIFIED TO DETERMINE THE STRUCTURAL APPROPRIATENESS OF THE DESIGN AND WILL NOT ASSUME RESPONSIBILITY FOR IMPROPER ENGINEERING OR USE.

SCALE: 1/2" = 1'-0"	PLATE: 2 OF 4
DRAWN: ESH	
DATE: 10/6/2019	
VERSION: 1.0	

DECK PLOT

1 DECK PLOT
 2 Scale: 1/2" = 1'-0"

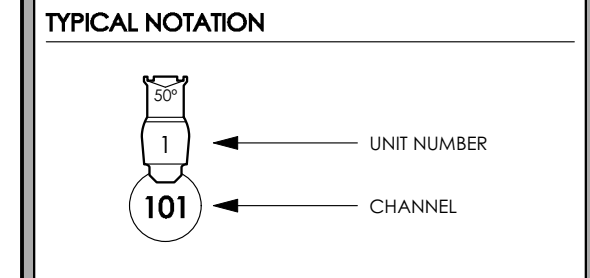


LEGEND

	ETC S4 19deg @ 575w	8 / 0
	ETC S4 19deg @ 750w	6 / 0
	ETC S4 26deg @ 575w	4 / 0
	ETC S4 36deg @ 575w	4 / 10
	ETC S4 50deg @ 575w	28 / 44
	ETC S4 Jr. 25-50deg @ 575w	8 / 8
	Selecon Pacific Zoom 25-50deg @ 575w	27 / 27
	ETC S4 PAR WFL @ 575w	21 / 20
	ETC Selador Desire D40 VNSP Round @ 110w	6 / 0
	ETC Selador Desire D40 NSP Round @ 110w	0 / 0
	ETC D40 Medium Round @ 110w	4 / 0
	PAR38 House Light @ 150w	18 / 22
	Confetti Cannon	3 / 0
	I-Cue	4 / 0
	Hazer	1 / 0

GENERAL NOTES

- Circuiting per production electrician.
- No substitutions without the written approval of the designer.
- Refer to hookup for all final color and template info.
- Please leave slack of all deck mounted instruments; position subject to change by designer at focus.
- Have barndoors, top-hats, and spare cuts of R-119, and R-132 in all sizes available at focus.
- If it is discovered a light will collide with one of the flying light object orbs during hang, move instrument to closest possible location to allow full range of focus.



REV #	REVISION	DATE
1	ROUGH	9/22/2019
2	PRELIMINARY	9/23/2019
3	LOS ANGELES FINAL	9/25/2019
4	REHEARSAL REVISION	10/2/2019
5	TECH REVISION	10/6/2019

AMSTERDAM

PRODUCED BY
THE USC SCHOOL OF DRAMATIC ARTS

DIRECTED BY:LILACH DEKEL-AYNERI
SCENERY DESIGNED BY:ROBERT FEFFER
LIGHTING DESIGNED BY:EDWARD HANSEN
COSTUMES DESIGNED BY:EDINA HSEER
PRODUCTION ELECTRICIAN:C.B. BORGER

SCENE DOCK THEATRE
LOS ANGELES, CA

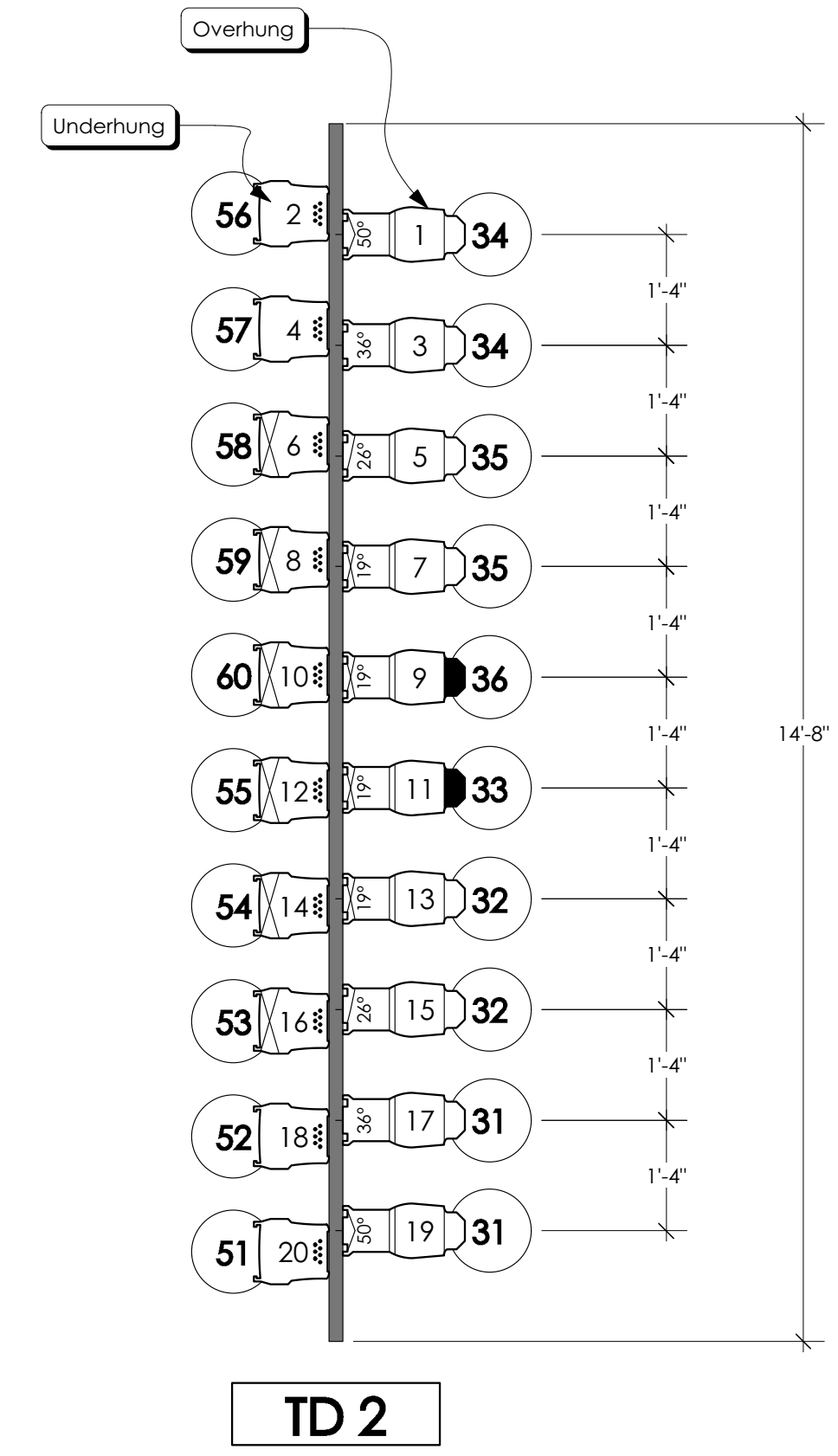
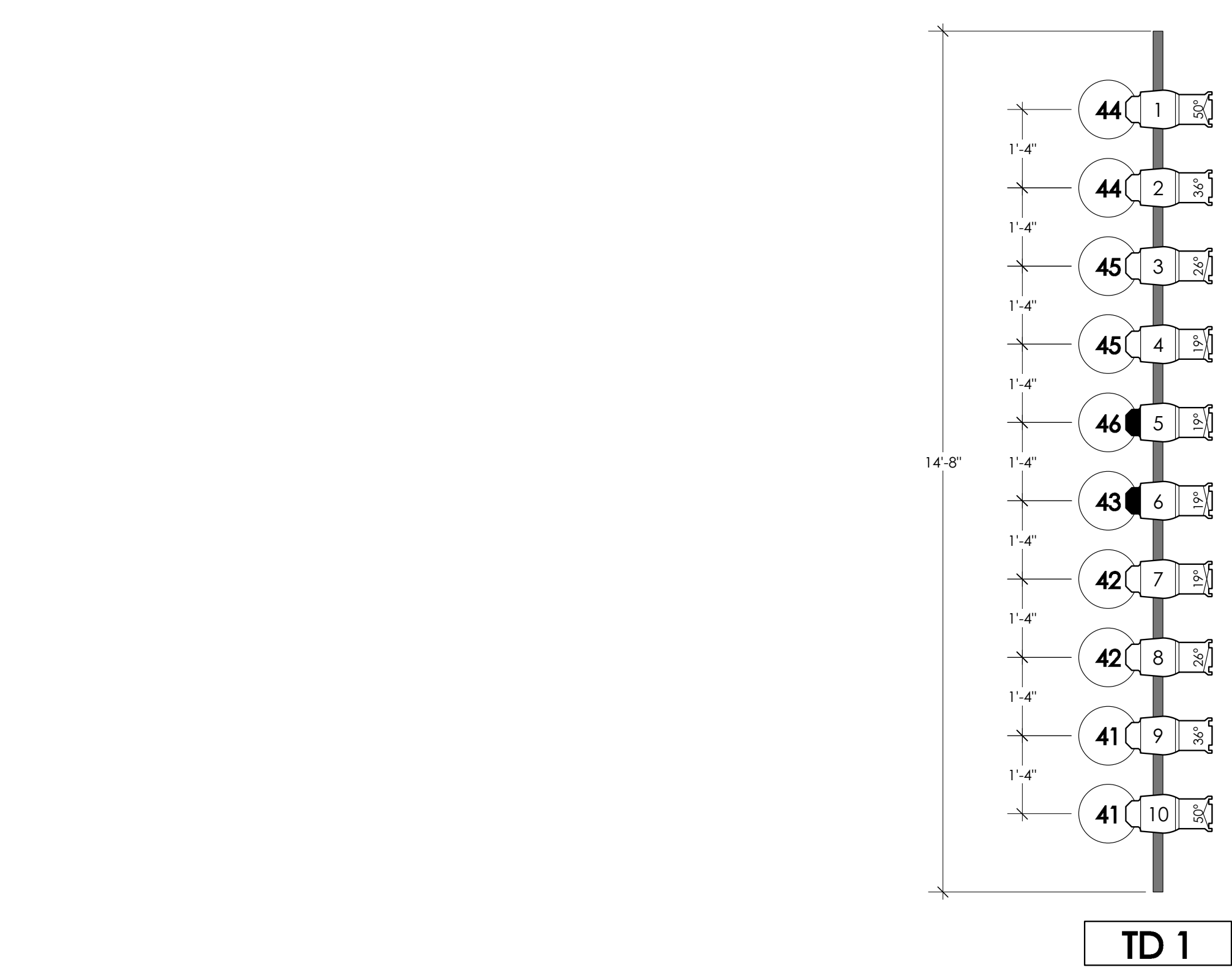
EDWARD HANSEN
LIGHTING DESIGN

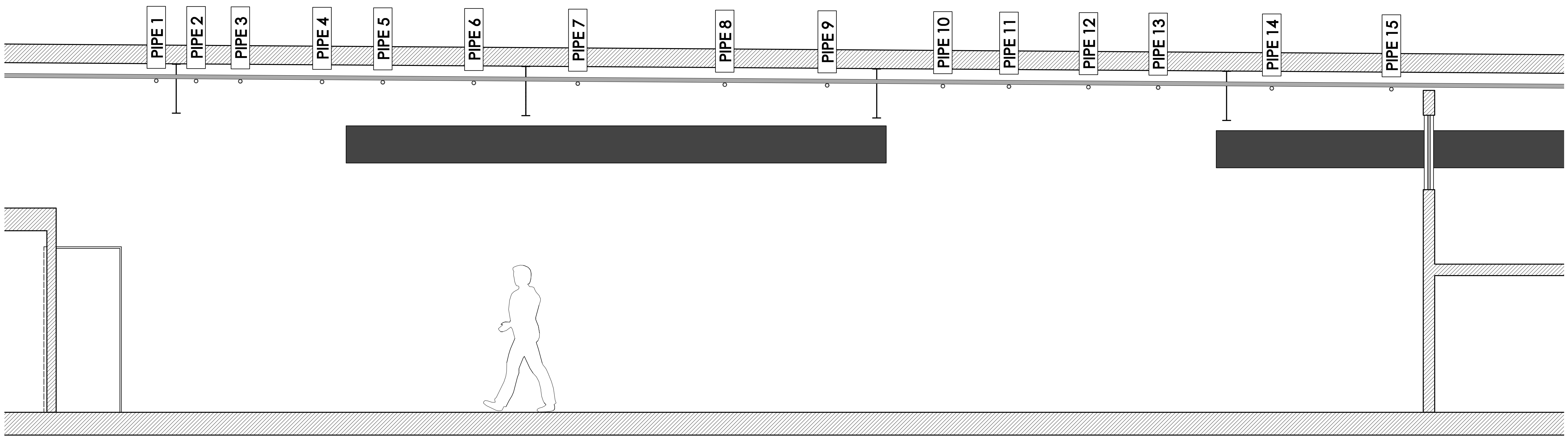
(914) 629-4164 • hansene@usc.edu

THE DRAWING REPRESENTS VISUAL CONCEPTS AND CONSTRUCTION SUGGESTIONS ONLY. IT DOES NOT REPLACE THE KNOWLEDGE AND ADVICE OF A LICENSED STRUCTURAL ENGINEER. THE DESIGNER IS UNQUALIFIED TO DETERMINE THE STRUCTURAL APPROPRIATENESS OF THE DESIGN AND WILL NOT ASSUME RESPONSIBILITY FOR IMPROPER ENGINEERING OR USE.

SCALE: 1/2" = 1'-0"	PLATE: 3 OF 4
DRAWN: ESH	
DATE: 10/6/2019	
VERSION: 1.0	

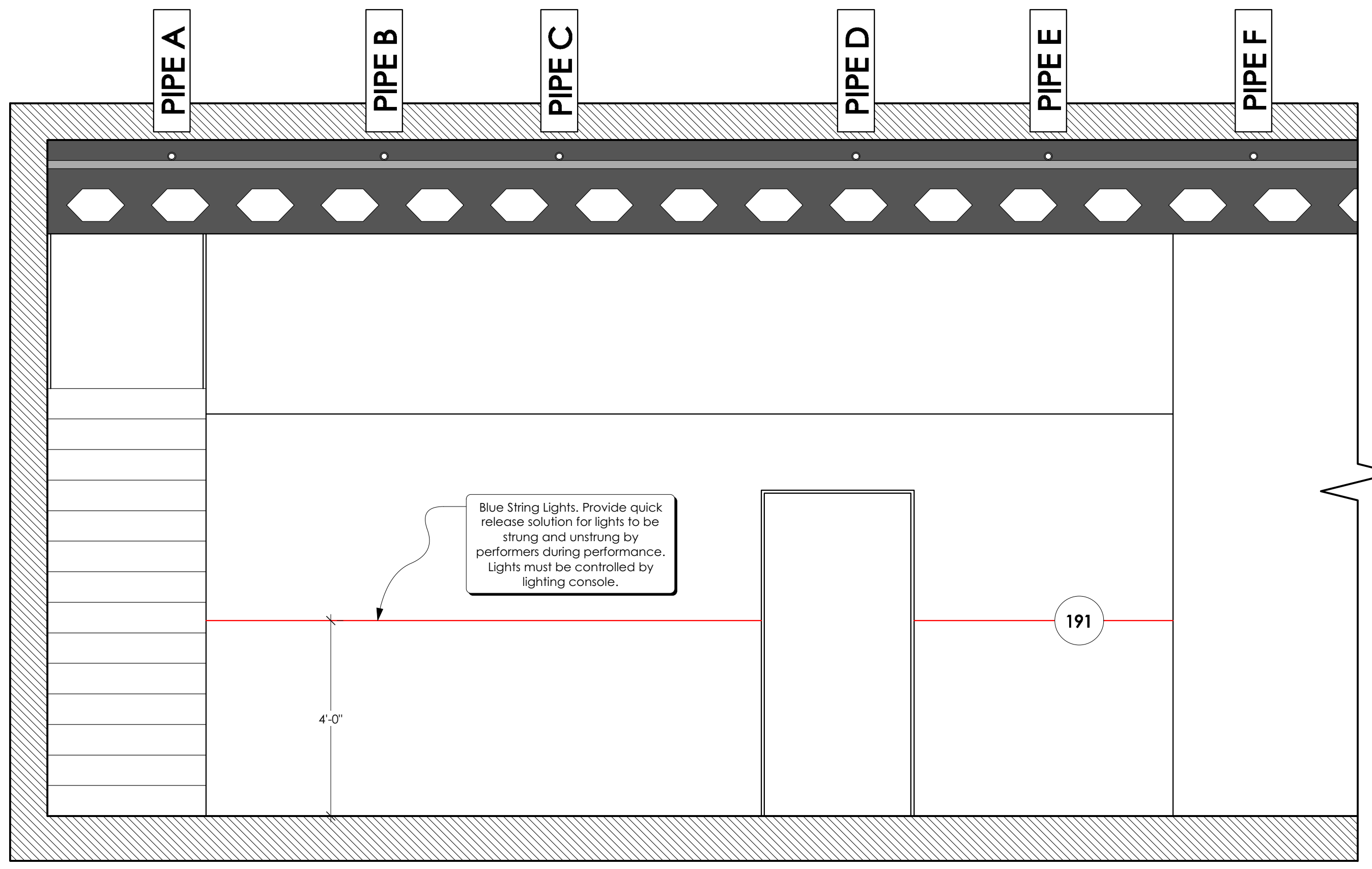
1 CL SECTION [Facing East]
3 Scale: 1/2" = 1'-0"



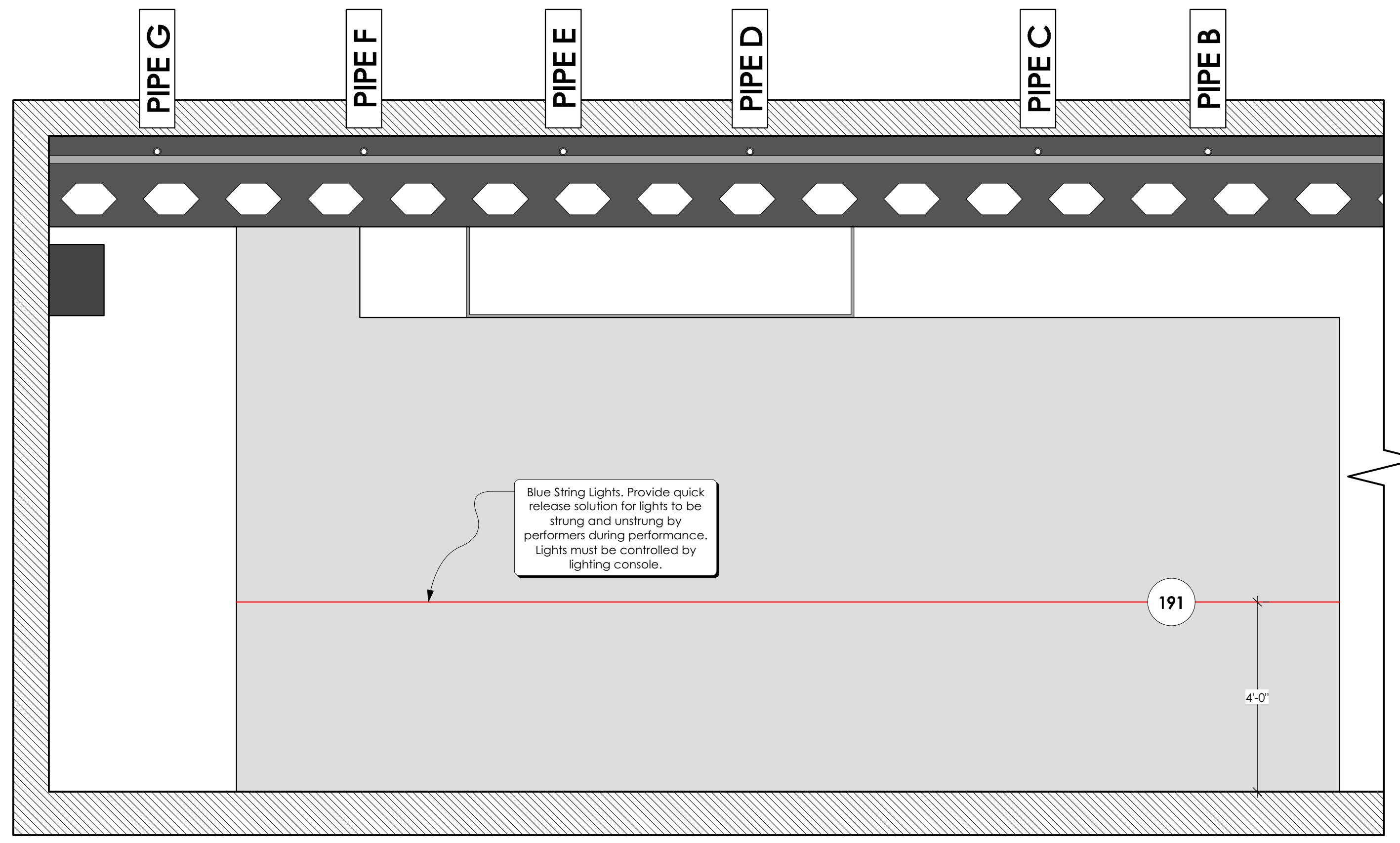


1 CL SECTION [Facing West]
4 Scale: 1/2" = 1'-0"

ADDITIONAL LIGHTING INSTRUMENTS AND ADDED PIPES OMITTED FROM THESE DRAWINGS FOR SIMPLICITY AND CLARITY



2 CL SECTION [Facing South]
4 Scale: 1/2" = 1'-0"



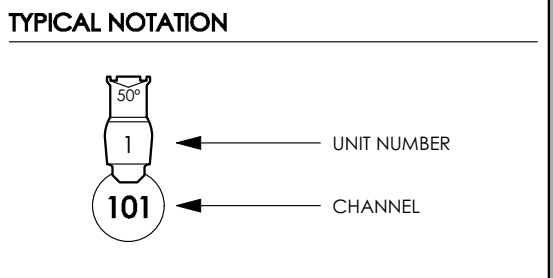
3 CL SECTION [Facing North]
4 Scale: 1/2" = 1'-0"

LEGEND

	ETC S4 19deg @ 575w	8 / 0
	ETC S4 19deg @ 750w	6 / 0
	ETC S4 26deg @ 575w	4 / 0
	ETC S4 36deg @ 575w	4 / 10
	ETC S4 50deg @ 575w	28 / 44
	ETC S4 Jr. 25-50deg @ 575w	8 / 8
	Selecon Pacific Zoom 25-50deg @ 575w	27 / 27
	ETC S4 PAR WFL @ 575w	21 / 20
	6" Fresnel @ 500w	30 / 29
	ETC Selador Desire D40 NSP Round @ 110w	6 / 0
	ETC Selador Desire D40 NSP Round @ 110w	0 / 0
	ETC D40 Medium Round @ 110w	4 / 0
	PAR38 House Light @ 150w	18 / 22
	Confetti Cannon	3 / 0
	I-Cue	4 / 0
	Hazer	1 / 0

GENERAL NOTES

1. Circuiting per production electrician.
2. No substitutions without the written approval of the designer.
3. Refer to hookup for all final color and template info.
4. Please leave slack of all deck mounted instruments; position subject to change by designer at focus.
5. Have barndoors, top-hats, and spare cuts of R-119, and R-132 in all sizes available at focus.
6. If it is discovered a light will collide with one of the flying light object orbs during hang, move instrument to closest possible location to allow full range of focus.



1	ROUGH	9/22/2019
2	PRELIMINARY	9/23/2019
3	LOS ANGELES FINAL	9/23/2019
4	REHEARSAL REVISION	10/2/2019
5	TECH REVISION	10/6/2019
REV #	REVISION	DATE

AMSTERDAM

PRODUCED BY
THE USC SCHOOL OF DRAMATIC ARTS

DIRECTED BY:LILACH DEKEL-AYNERI
SCENERY DESIGNED BY:ROBERT FEFFER
LIGHTING DESIGNED BY:EDWARD HANSEN
COSTUMES DESIGNED BY:EDINA HESER
PRODUCTION ELECTRICIAN:C.B. BORGER

SCENE DOCK THEATRE
LOS ANGELES, CA

EDWARD HANSEN
LIGHTING DESIGN

(914) 629-4164 • hansene@usc.edu

THE DRAWING REPRESENTS VISUAL CONCEPTS AND CONSTRUCTION SUGGESTIONS ONLY. IT DOES NOT REPLACE THE KNOWLEDGE AND ADVICE OF A LICENSED STRUCTURAL ENGINEER. THE DESIGNER IS UNQUALIFIED TO DETERMINE THE STRUCTURAL APPROPRIATENESS OF THE DESIGN AND WILL NOT ASSUME RESPONSIBILITY FOR IMPROPER ENGINEERING OR USE.

SCALE: 1/2" = 1'-0"	PLATE: 4 OF 4
DRAWN: ESH	
DATE: 10/6/2019	
VERSION: 1.0	

ELEVATIONS